

920066PL USER MANUAL

Thermal actuators are mainly used in floor heating systems to control closing and opening of the valves. It is specifically applied to electric drive part of the branch manifold valve, small valve and dynamic balance valve. No noise, fast installation and easy disassembly.



Feature:

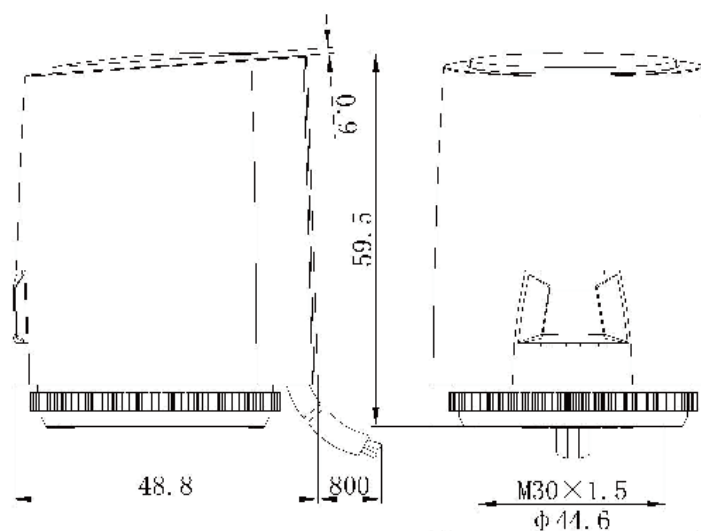
Compact size, small dimensions	Fast installation and disassembly
Noiseless	Various adapters
Low power consumption	Full view stroke indication

Technical parameters:

Control direction: Normally closed/Normally open	Force: 100±10N
Voltage: 12v 24v 230v	Protection Grade: IP54
Power consumption: 2W	Working temperature: -5 °C -60 °C
Stroke: ≥4mm	Adapter: M30x1.5mm/M28x1.5mm
Closing and opening time: 3-5mins	Cable length: 800MM
Standard: EN 60730	Housing material: PA66+30%GF

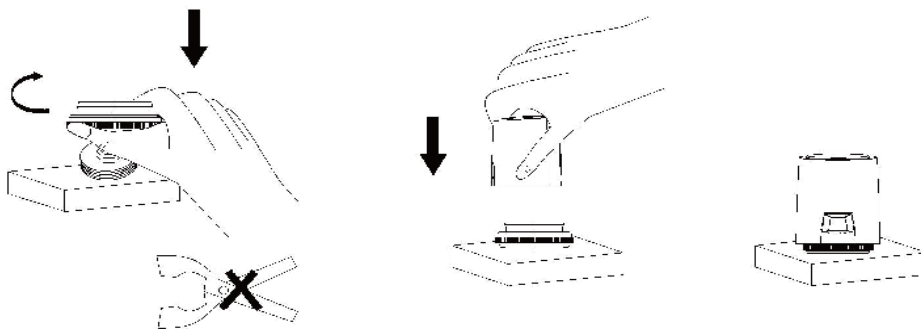
Dimensions:

Unit: MM



Installation and disassembly:

Installation:

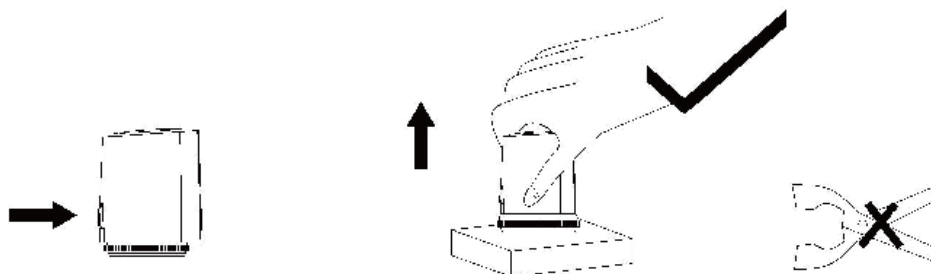


Step 1
Rotate the nut clockwise
and install it on the valve
(Note: Do not use pipe pliers)

Step 2
Press down on the actuator
against the adapter

Step 3
Finish installation

Disassembly:



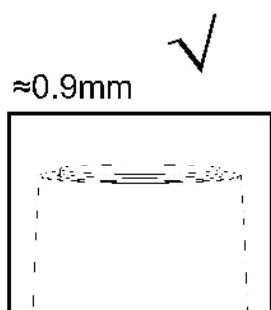
Step 1
Press the button with your hand

Step 2
Press and hold the button and
lift up to remove the actuator

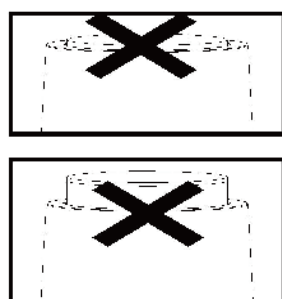
Step 3
Do not use pipe pliers,
clamp and other tools

Precautions:

Indication cover confirmation

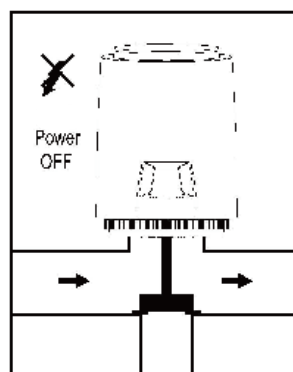


Normal situation



Abnormal situation

Working situation



N/C normally closed

